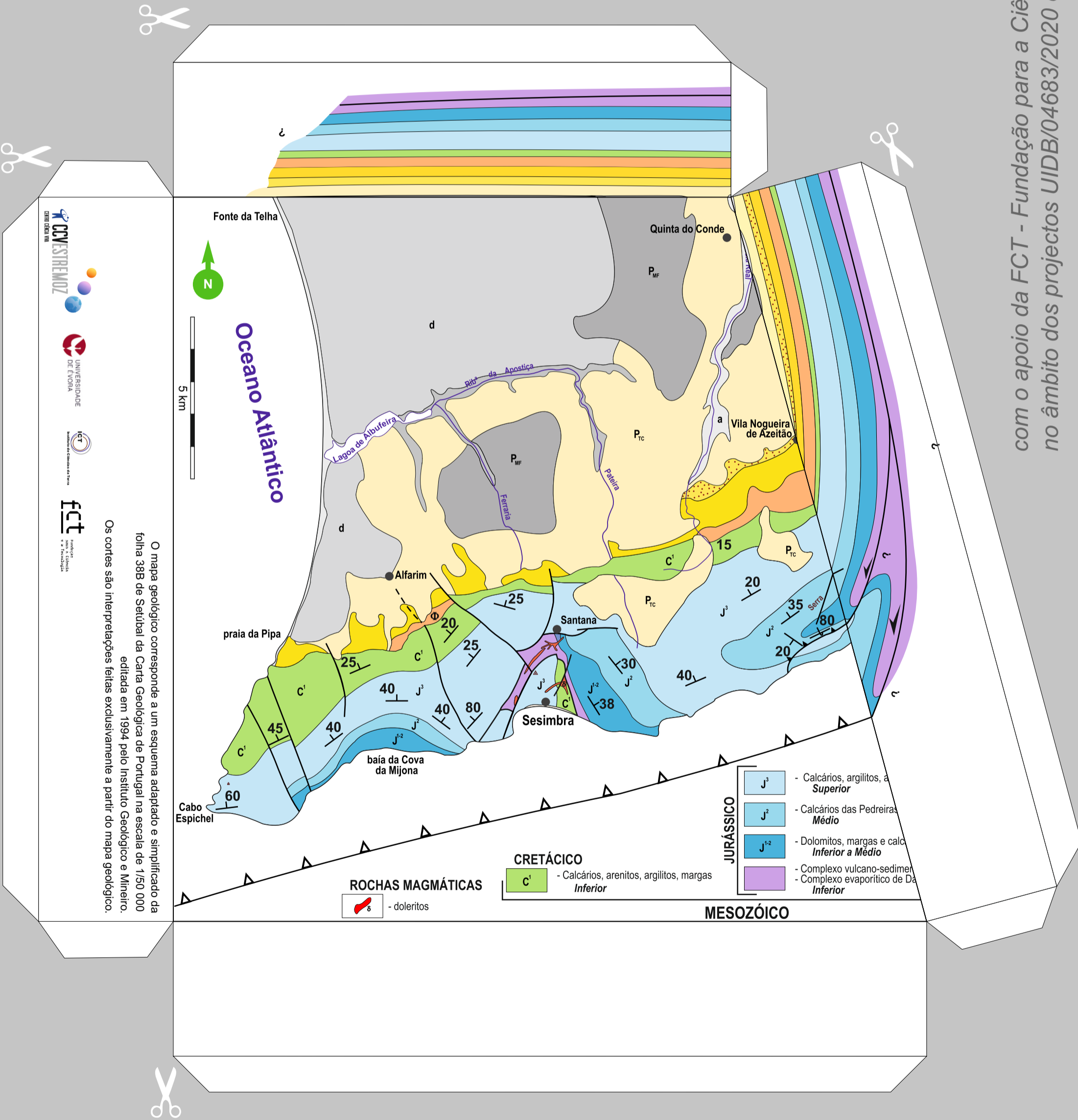
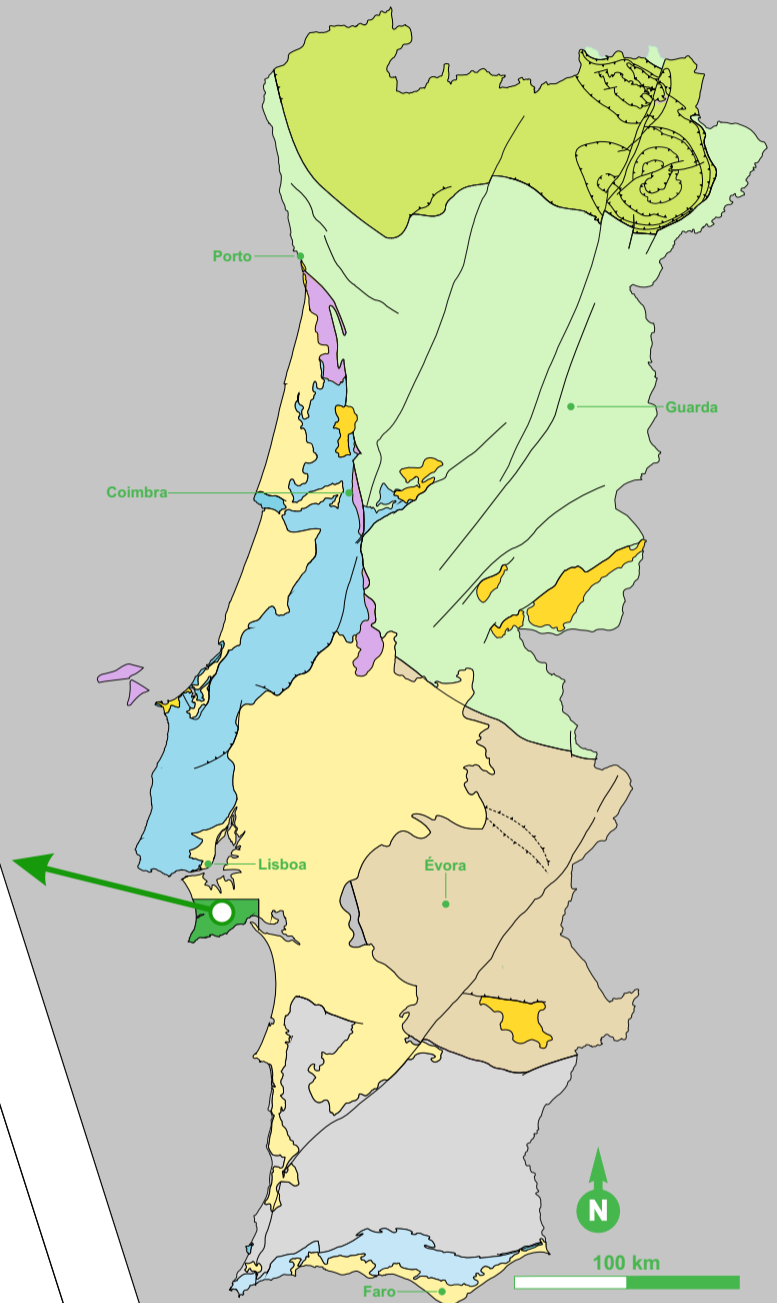
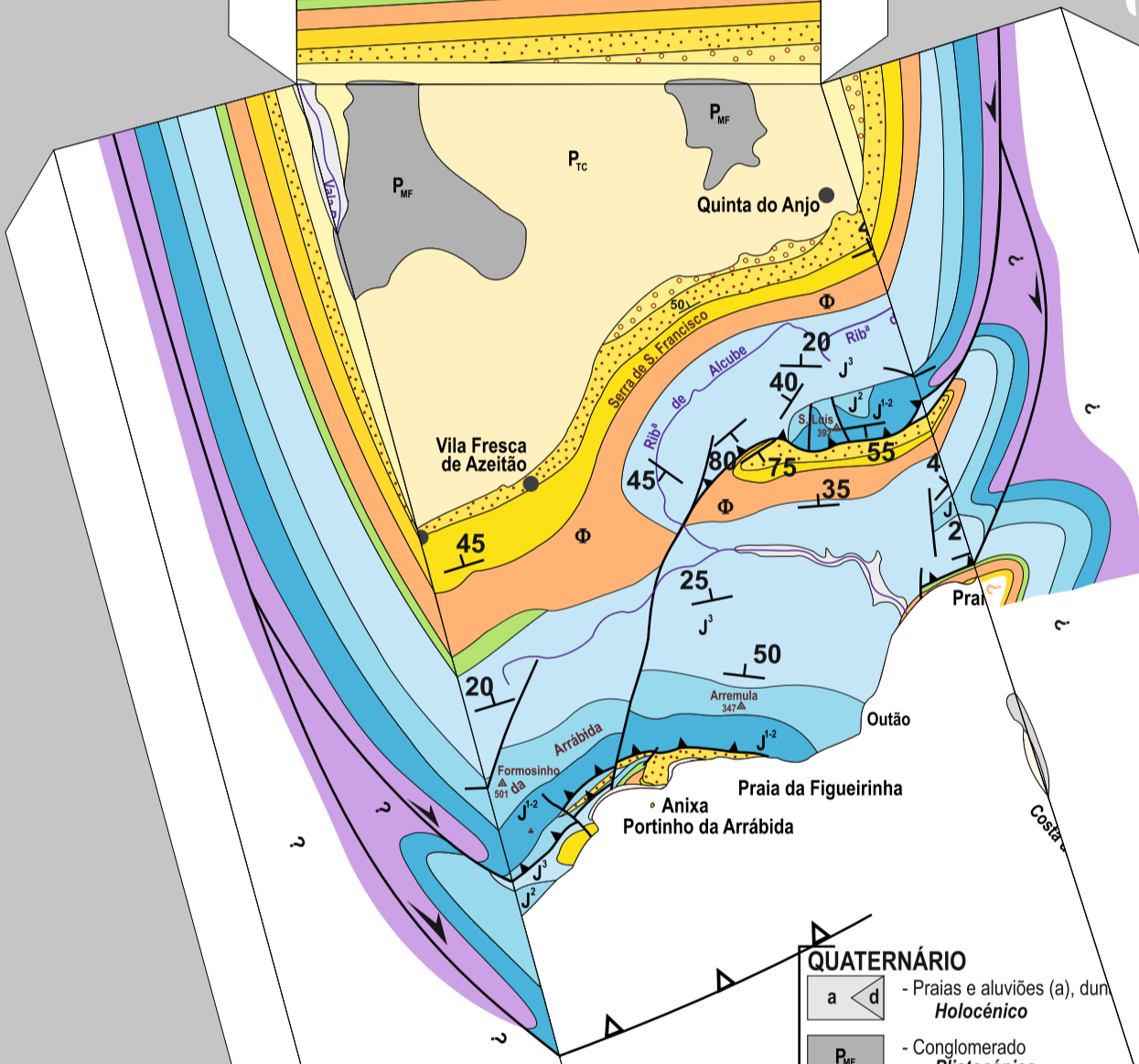
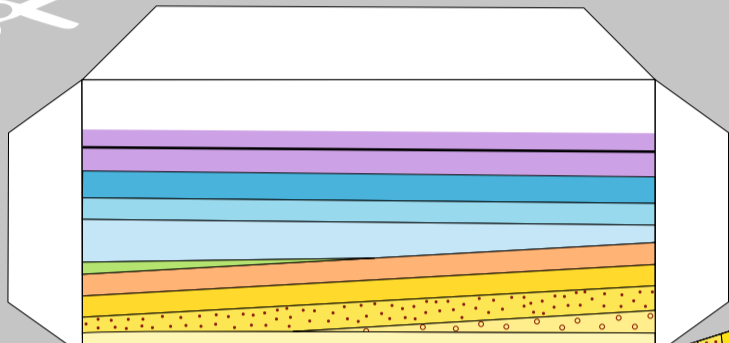
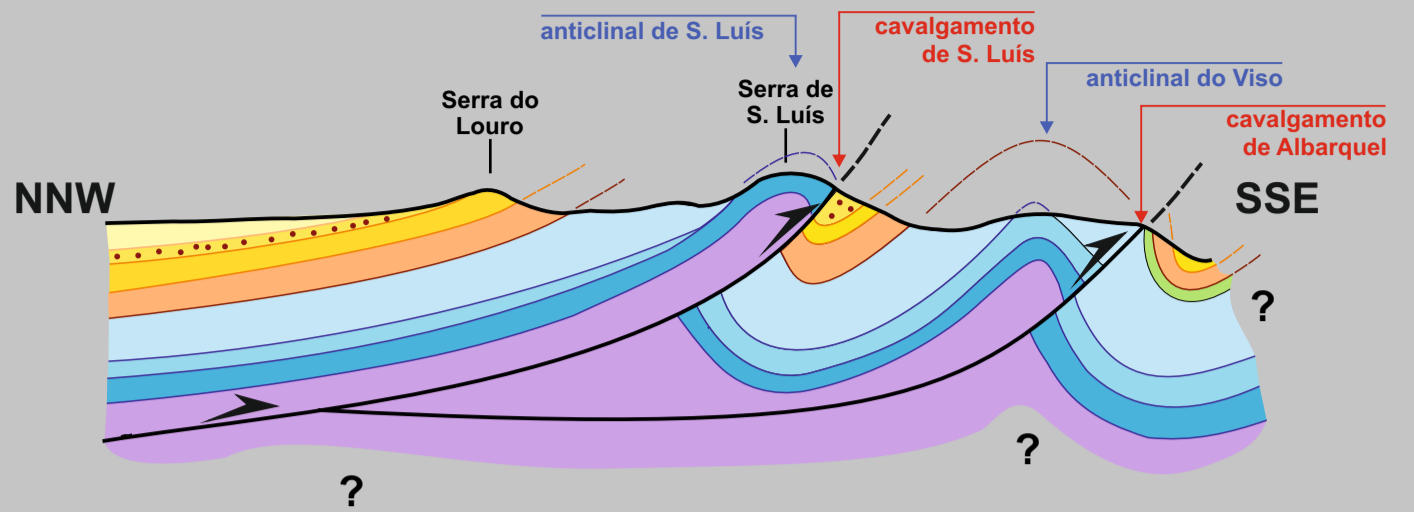




Recorta... dobra... cola... e verás a Geologia da Arrábida de uma forma diferente!!!



O mapa geológico corresponde a um esquema adaptado e simplificado da folha 38B de Setúbal da Carta Geológica de Portugal na escala de 1/50 000 editada em 1994 pelo Instituto Geológico e Mineiro. Os cortes são interpretações feitas exclusivamente a partir do mapa geológico.






QUATERNÁRIO

-  - Praias e aluviões (a), dunas
Holocénico
-  - Conglomerado
Plistocénico

NEOGÉNICO

-  - Areias feldspáticas
Pliocénico

MIOCÉNICO

-  - Conglomerados, areias e margas
Superior
-  - Arenitos, calcarenitos e areias
Médio
-  - Calcarenitos, argilitos e margas
Inferior

PALEOGÉNICO

-  - Conglomerados, arenitos, margas e calcários

CENOZÓICO

arenitos argilitos...

calcários dolomíticos

calcários argilosa



